



WORLD'S BEST
ALLOY BULLBARS

East Coast Bullbars (ECB Pty Ltd)

Tel: 07 3897 5700

Fax: 07 3283 1168

ecb@ecb.com.au www.ecb.com.au

29 Snook St
Clontarf QLD 4019
Australia

Po Box 122
Margate QLD 4019
Australia

EAMA38SY

REPLACES: 18.02.10

REVISED: 16.01.18

FITTING INSTRUCTIONS

MAZDA BT50 09/08-09/11 ECB ARC™ BAR (WITH FOG LAMPS) VEHICLE FRONTAL PROTECTION SYSTEM (VFPS) FOR AIR BAG & ADR COMPLIANT VEHICLES

Check installation hardware before commencing.

1. Remove bumper cover from vehicle. Lift bonnet. Two plastic clips (one each side of bonnet latch) two Phillips head screws and four plastic clips (one screw, two clips each side) beside headlamps, two 10mm head bumper forward and remove bolts and two 8mm bolts from rear of bumper wings under guards (one each side), light wiring from rear of lights and two plastic clips from under front of bumper cover. Carefully pull cover toward side of vehicle and unclip. Gently lift
2. Remove bumper cover support. Access from under front of support, two 17mm head bolts (one each side) and inside engine bay on top of chassis rail. Two 17mm head bolts (one each side). **See figure 1.**
3. Remove passenger side tow hook / tie down bracket. Four 17mm head bolts. **See figure 2.**
4. Remove driver's side tie down bracket. Two 17mm head bolts.
5. Attach ECB steel angle bracket (supplied) to tie down hook encapsulated nuts, angle leg to outside of vehicle. Use two M12 x 35 x 1.5mm bolts, flat and spring washers (supplied) on underside of chassis. **FINGER TIGHTEN ONLY. See figure 3.**
6. Attach steel mounting bracket (supplied) to chassis where bumper cover support brackets were removed. Place lower leg to inside of angle brackets attached to chassis. Use original bolts for top front fitment, one M12 x 35 x 1.25mm bolt, flat washer and spring washer (supplied)(per side) for top fitment and two 3/8 x 1 1/2 bolts, flat washers, spring washers and nuts (supplied) (per side) for lower leg. Align with vehicle, checking bracket is centred. **TIGHTEN IN POSITION ON TOP FRONT BOLTS ONLY. NOTE: Steel mounting bracket must not touch turbo cooler, oil cooler or air conditioning receiver dryer. See figures 4, 5 and 6. If steel mounting brackets are scratched when fitted then treat with a rust inhibitor or similar.**
7. **TIGHTEN BOLTS**, front of chassis rail first, followed by top of chassis rail, tow points on chassis rail and finally mounting bracket lower leg to steel angle brackets.
8. Using a sharp pair of scissors carefully cut around templates (supplied) for bumper cut. **See templates 1 and 2. CAUTION: Measure templates to ensure correct size as some printers may vary sizing.**
9. Place templates in correct position and mark bumper for cut. **See figures 7 and 8. Caution:** Ensure placement of templates is correct. Cut marked area using a jigsaw or similar.
10. Locate vehicle wiring loom for indicator / park lights and fog lamps on front of radiator support under headlamps. Splice ECB indicator / park light wiring (supplied) and fog lamp wiring (supplied) into vehicle wiring loom. Use cable locks (supplied). Secure to vehicle fog lamp wiring using 150mm cable ties (supplied).
11. Refit top of bumper cover in the reverse order to step 1.



**WORLD'S BEST
ALLOY BULLBARS**

East Coast Bullbars (ECB Pty Ltd)

Tel: 07 3897 5700

Fax: 07 3283 1168

ecb@ecb.com.au www.ecb.com.au

29 Snook St
Clontarf QLD 4019
Australia

Po Box 122
Margate QLD 4019
Australia

12. Fit ECB LED indicator / park lights (supplied) into protection bar as per instructions supplied with the LED indicator kit. **NOTE: Ensure park light is to outside. See figure 9.**
13. Attach ECB fog lights to protection bar. Place M6 x 20 bolts, spring washers (supplied) through light mount from inside and attach nut to top. Slide assembly into light mount in Protection bar and centralize light to hole. **See figure 10. TIGHTEN ALL BOLTS FIRM ONLY. Do not fit fog light trims at this stage.**
14. Fit 6mm clip lock trim (supplied) to rear of protection bar **NOTE: Trim off lower edge on 6mm trim on an angle so trim will sit flush with end of protection bar. See figures 11, 12 and 13.**
15. Attach protection bar to outside of steel mounting brackets. Use six ½ x 1 ½ bolts, flat and spring washers and nuts (supplied) **DO NOT TIGHTEN.**
16. Align protection bar with vehicle. **See figures 14 and 15. TIGHTEN ALL BOLTS.**
17. Connect indicator / park light wiring. **CHECK OPERATION.**
18. Connect fog lights. **CHECK OPERATION.** Aim with low beam, **TIGHTEN IN POSITION.** Fit ECB fog light trims (supplied) to protection bar, wider part of trim to inside.
19. Remove inner plastic clip from bottom of inner guard. Fit ECB body guards to outside of nut on front of radiator support and place original bolt into underside hole. Fit M6 x 20 bolt and flat washer through inner hole and secure with flat washers and nyloc nut. **Tighten all bolts. See figure 16.**
20. Fit under body guard between ECB steel mount lower legs using four M6 x 25 bolts, flat washers and nyloc nuts. **See figure 17. Tighten all bolts.**

NOTE: For turbo diesel models upper six air vents are to be fitted with ECB logo at bottom direct air onto turbo cooler.

NOTE: Towing points are provided on steel mounts. These are designed to be used for straight line towing and light snatching using an elastic type snatch rope. Always take care when towing or snatching and observe safety requirements of equipment being used.

ENSURE NUMBER PLATE IS CLEARLY VISABLE

Note: When fitting/refitting the licence plate to the vehicle, ensure there is no obstruction to licence plate vision in accordance with local authorities. If required relocate licence plate to an alternate location.

Further VFPS Notes:

- a) Do not attach VFPS to the vehicle using anchorages not intended for this purpose (e.g. engine mounting bolts).
- b) Do not use this product for any vehicle make or model, other than those specified by the VFPS manufacturer.
- c) Do not remove the plaque or label from the VFPS.
- d) Do not modify the structure of the VFPS in any way.
- e) No accessory or fitment should project forward of the VFPS forward profile.
- f) **ENSURE THESE INSTRUCTIONS ARE LEFT WITH VEHICLE OWNER AND/OR OPERATOR.**

IMPORTANT INFORMATION

Periodically check bolts and nuts for correct tightness, especially if travelling on rough roads



**WORLD'S BEST
ALLOY BULLBARS**

East Coast Bullbars (ECB Pty Ltd)

Tel: 07 3897 5700

Fax: 07 3283 1168

ecb@ecb.com.au www.ecb.com.au

29 Snook St
Clontarf QLD 4019
Australia

Po Box 122
Margate QLD 4019
Australia

FITTING KIT

1 – Steel mounting brackets.	
2 – Steel angle mounting brackets.	2 – ECB fog lights.
4 – 3/8 x 1 1/2 bolts and nuts.	2 – Fog light surrounds
8 – 3/8 flat washers.	2 – M6 x 20 bolts.
4 – 3/8 spring washers.	2 – M6 flat washers.
6 – M12 x 1.5 x 35mm bolts.	2 – M6 spring washers.
6 – 1/2 x 1/2 bolts and nuts.	2 – M6 nuts
18 – 1/2 flat washers.	10 – Cable locks
12 – 1/2 spring washers.	1 – 2600mm length of 6mm clip lock trim
1 – ECB LED Indicator / Park light kit.	2 – 150mm zip ties.

17mm bolt Bumper Cover Support 17mm head bolt

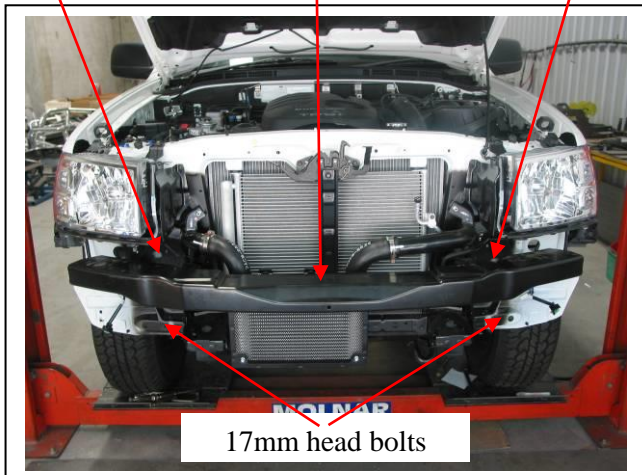


Figure 1

17mm head bolts

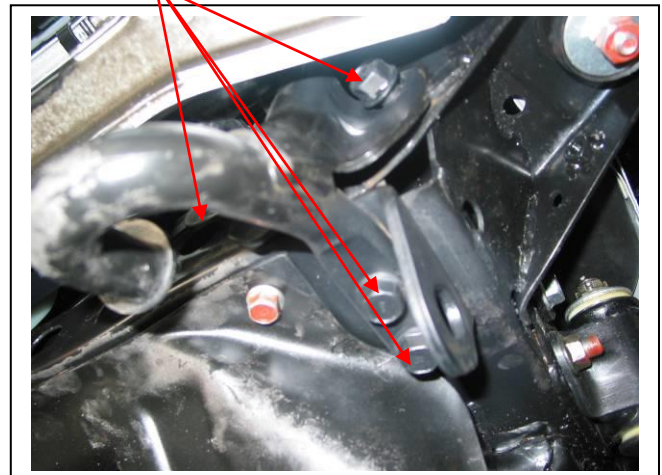


Figure 2 – Passenger side shown

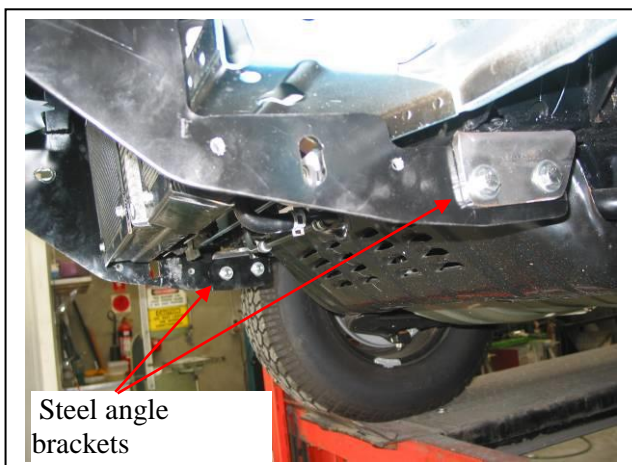


Figure 3



Figure 4 – Lower angle mount, drivers side shown



**WORLD'S BEST
ALLOY BULLBARS**

East Coast Bullbars (ECB Pty Ltd)

Tel: 07 3897 5700

Fax: 07 3283 1168

ecb@ecb.com.au www.ecb.com.au

29 Snook St
Clontarf QLD 4019
Australia

Po Box 122
Margate QLD 4019
Australia

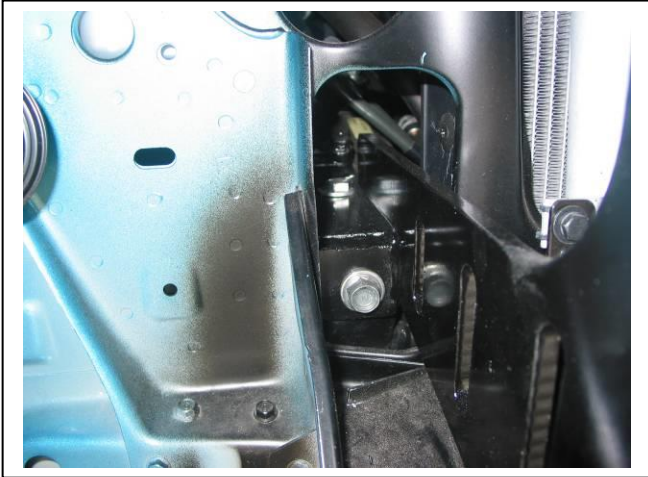


Figure 5 - Top Chassis mount, driver side shown



Figure 6

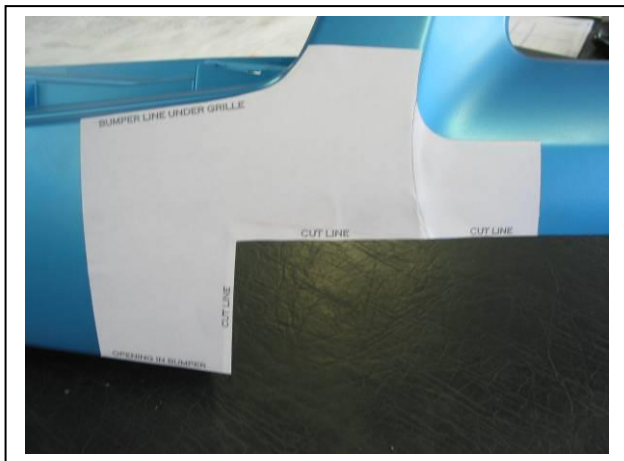


Figure 7

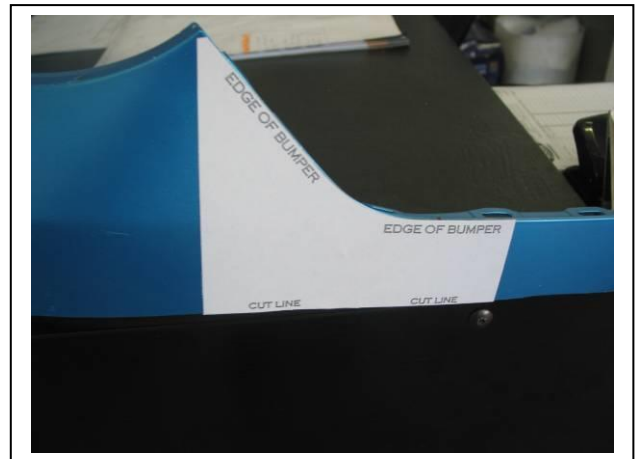


Figure 8

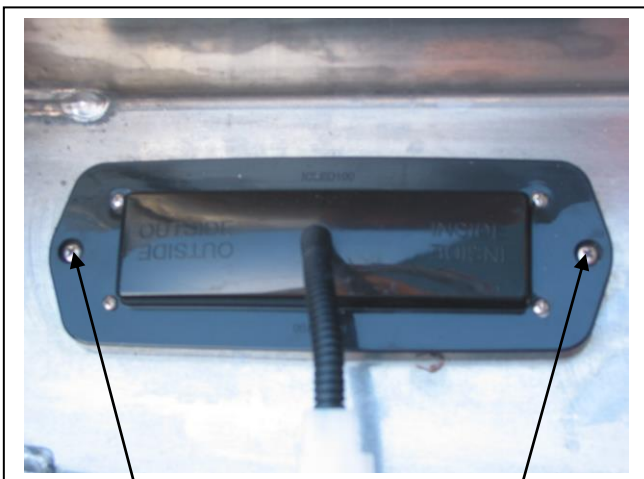
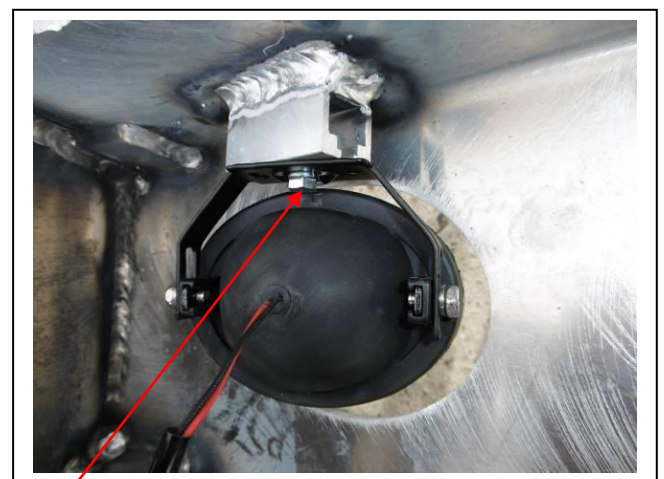


Figure 9
Stainless steel self-tappers



M6 bolt **Figure 10**



**WORLD'S BEST
ALLOY BULLBARS**

East Coast Bullbars (ECB Pty Ltd)

Tel: 07 3897 5700

Fax: 07 3283 1168

ecb@ecb.com.au www.ecb.com.au

29 Snook St
Clontarf QLD 4019
Australia

Po Box 122
Margate QLD 4019
Australia

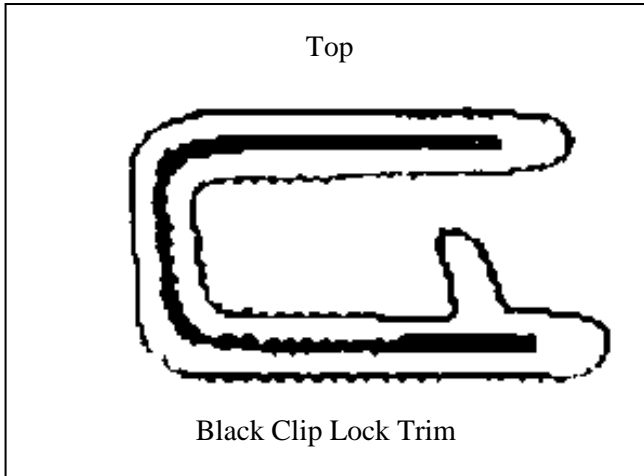
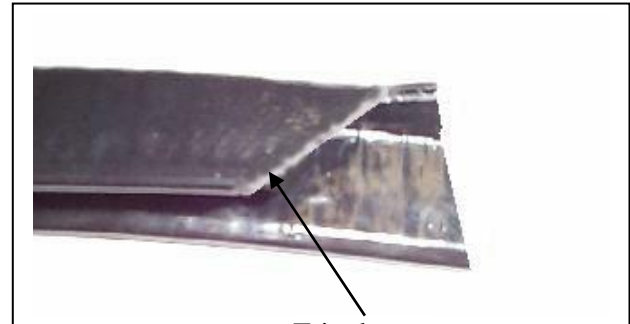


Figure 11



Trim lower
edge on an
angle

Figure 12

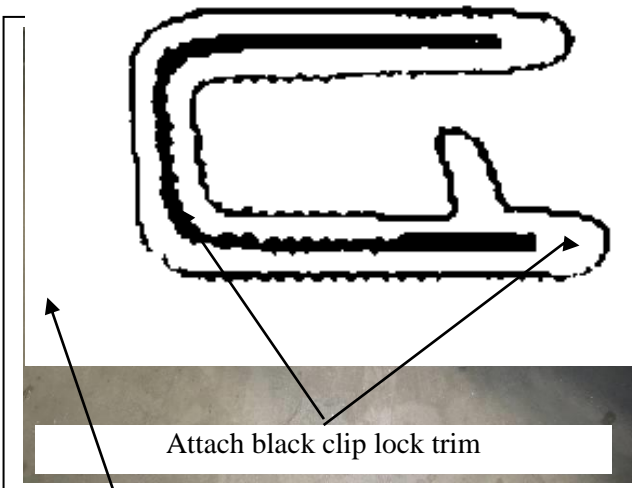


Figure 13

Trim level with the
back of protection bar



Figure 14 – Front view shown



Figure 15 – Side view shown



Figure 16



**WORLD'S BEST
ALLOY BULLBARS**

East Coast Bullbars (ECB Pty Ltd)

Tel: 07 3897 5700

Fax: 07 3283 1168

ecb@ecb.com.au www.ecb.com.au

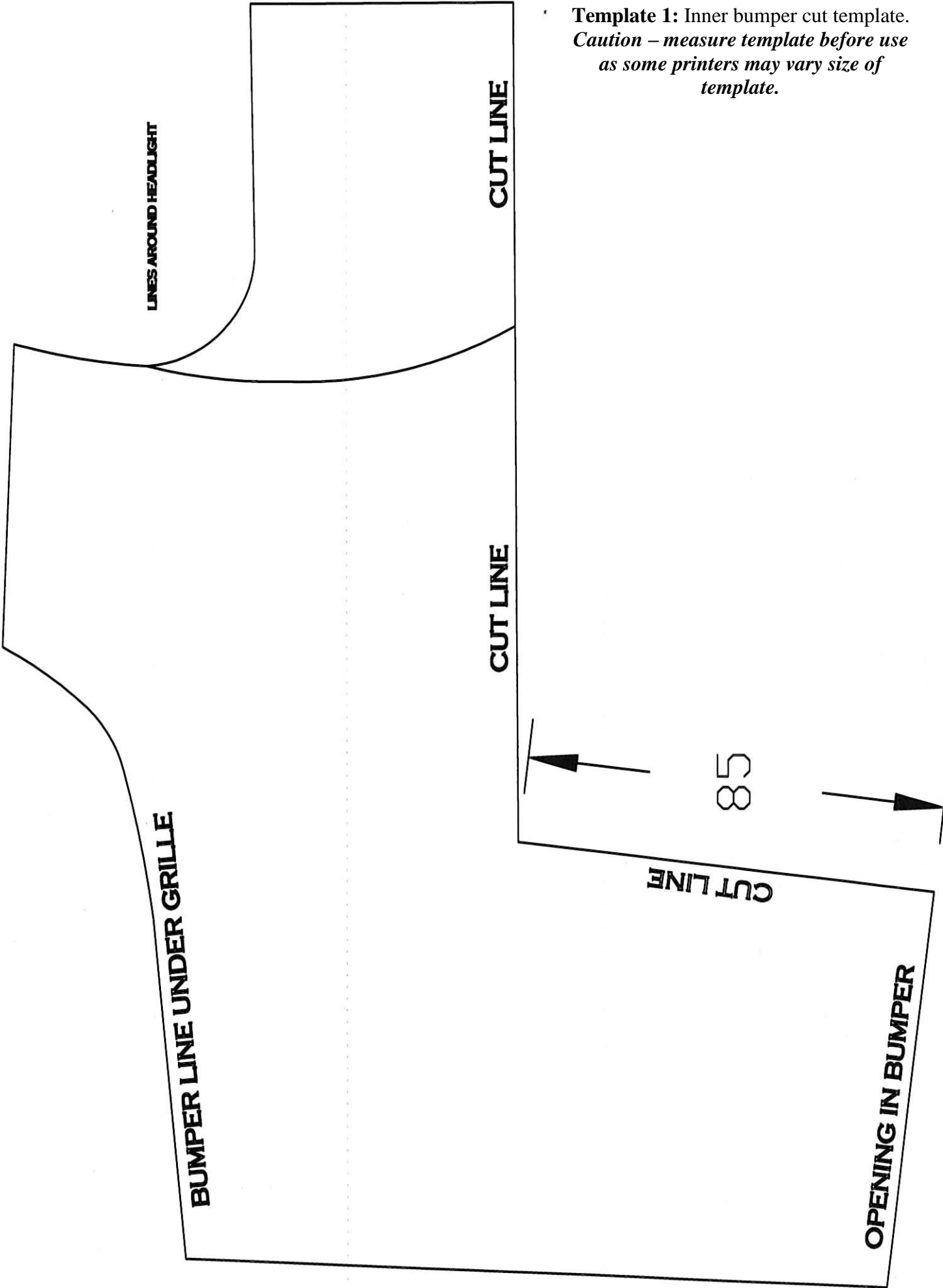
29 Snook St
Clontarf QLD 4019
Australia

Po Box 122
Margate QLD 4019
Australia



Figure 17

Template 1: Inner bumper cut template.
*Caution – measure template before use
as some printers may vary size of
template.*





**WORLD'S BEST
ALLOY BULLBARS**

East Coast Bullbars (ECB Pty Ltd)

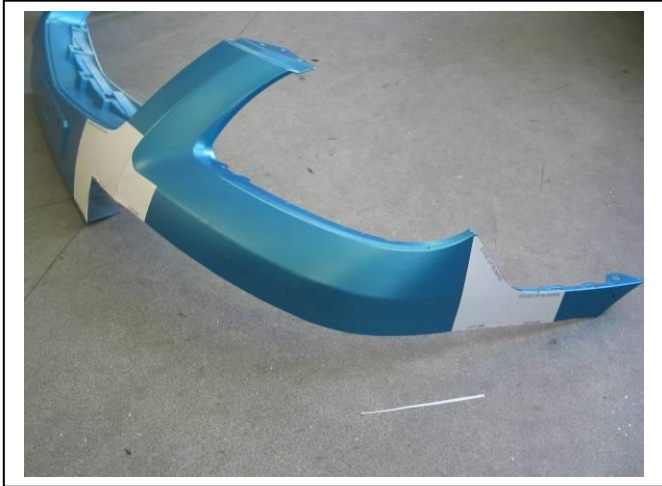
Tel: 07 3897 5700

Fax: 07 3283 1168

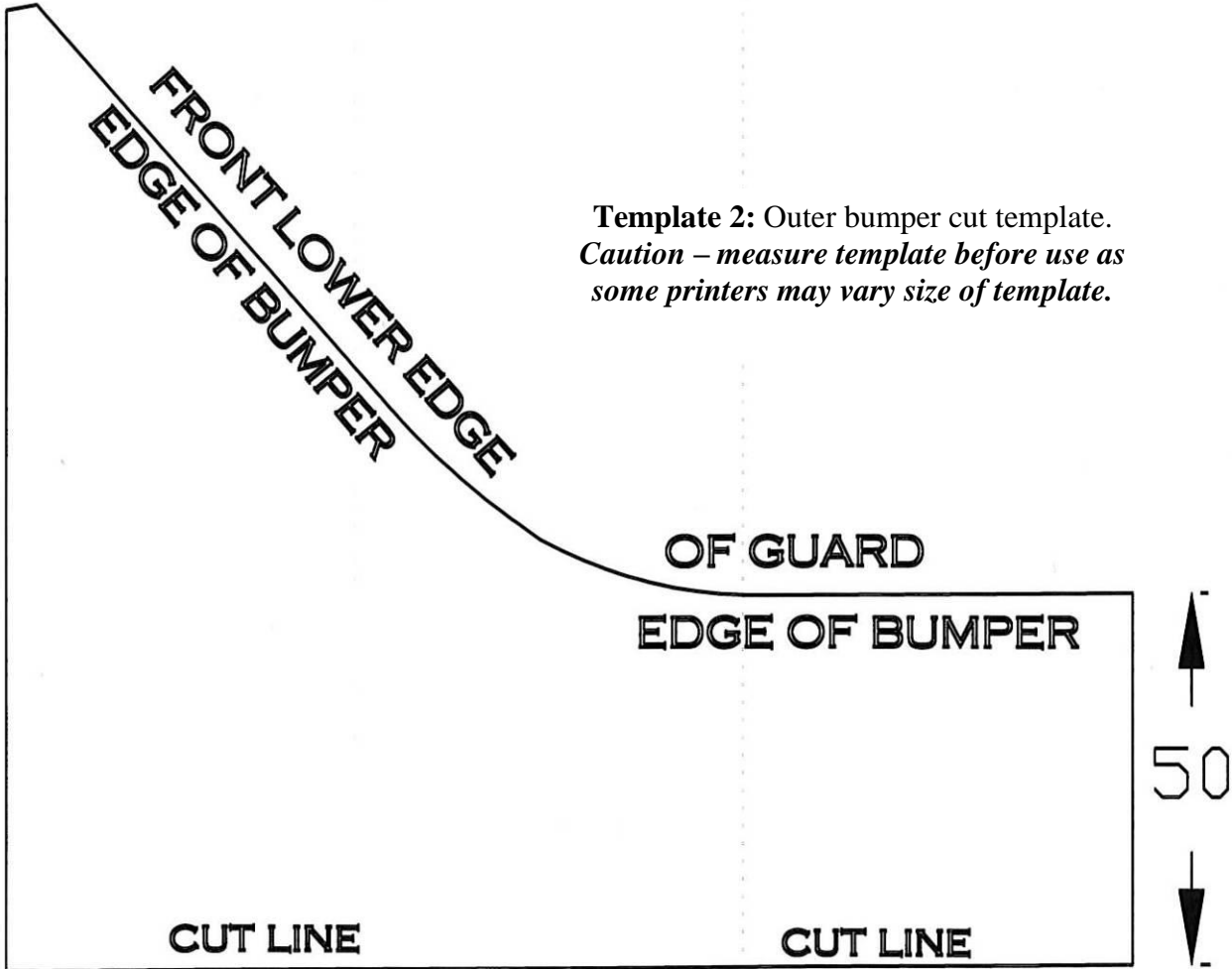
ecb@ecb.com.au www.ecb.com.au

29 Snook St
Clontarf QLD 4019
Australia

Po Box 122
Margate QLD 4019
Australia



Template placement on plastic bumper



Template 2: Outer bumper cut template.
Caution – measure template before use as some printers may vary size of template.



**WORLD'S BEST
ALLOY BULLBARS**

East Coast Bullbars (ECB Pty Ltd)

Tel: 07 3897 5700

Fax: 07 3283 1168

ecb@ecb.com.au www.ecb.com.au

29 Snook St
Clontarf QLD 4019
Australia

Po Box 122
Margate QLD 4019
Australia



**WORLD'S BEST
ALLOY BULLBARS**

East Coast Bullbars (ECB Pty Ltd)

Tel: 07 3897 5700

Fax: 07 3283 1168

ecb@ecb.com.au www.ecb.com.au

29 Snook St
Clontarf QLD 4019
Australia

Po Box 122
Margate QLD 4019
Australia

We value your comments

Dear Fitter,

ECB would like to know how you went with the installation of this product. We value your comment and may need to contact you to clarify some details so please complete your contact details clearly.

We would appreciate if you could complete as many of the following details as possible.

Your Name:	Your contact No.
Product Part No.	Product Invoice No.
Product Description:	Make, model, and year of vehicle:
Product Work Order No.	Company your from/Company product purchased from:

Date of Fitment: ____/____/____

Was the fitting hardware supplied complete?

Yes

No

If no what was not supplied

Did the installation go well?

Yes

No

Please provide comments

Please draw diagrams if you need to.

Post to
Reply Paid 122
PO Box 122
Margate QLD 4019

Fax to
(07) 3283 1168



**WORLD'S BEST
ALLOY BULLBARS**

East Coast Bullbars (ECB Pty Ltd)

Tel: 07 3897 5700

Fax: 07 3283 1168

ecb@ecb.com.au www.ecb.com.au

29 Snook St
Clontarf QLD 4019
Australia

Po Box 122
Margate QLD 4019
Australia



WORLD'S BEST
ALLOY BULLBARS

East Coast Bullbars (ECB Pty Ltd)

Tel: 07 3897 5700

Fax: 07 3283 1168

ecb@ecb.com.au www.ecb.com.au

29 Snook St
Clontarf QLD 4019
Australia

Po Box 122
Margate QLD 4019
Australia

DESPATCH CHECKLIST EAMA38SY

ICZBKCM38



Work Order #	
Finish:	
Transport:	
Due Date:	

- 1 – Steel mounting brackets.
- 2 – Steel angle mounting brackets.
- 3 – Pieces under body guard.
- 1 – Bolt kit.
- 1 – ECB LED Indicator / Park light kit.
- 2 – ECB fog lights.
- 2 – Fog light surrounds.
- 1 – 2600mm length 6mm clip lock trim.
- 2 – ECB overrides – **Fitted to Bar**
- 9 – 6mm air scoops – **Fitted to Bar**
-

**See other side of
this page for
photos of all
mounts**



Is this product “the best it can be” Yes _____/_____

Wrapper’s initials / Checker initials

If **NO** fix before continuing

All parts checked and completed by:

Nut and bolts: _____ Date __/__/__

Order control: _____ Date __/__/__

Final wrap check: _____ Date __/__/__



**WORLD'S BEST
ALLOY BULLBARS**

East Coast Bullbars (ECB Pty Ltd)

Tel: 07 3897 5700

Fax: 07 3283 1168

ecb@ecb.com.au www.ecb.com.au

29 Snook St
Clontarf QLD 4019
Australia

Po Box 122
Margate QLD 4019
Australia

